

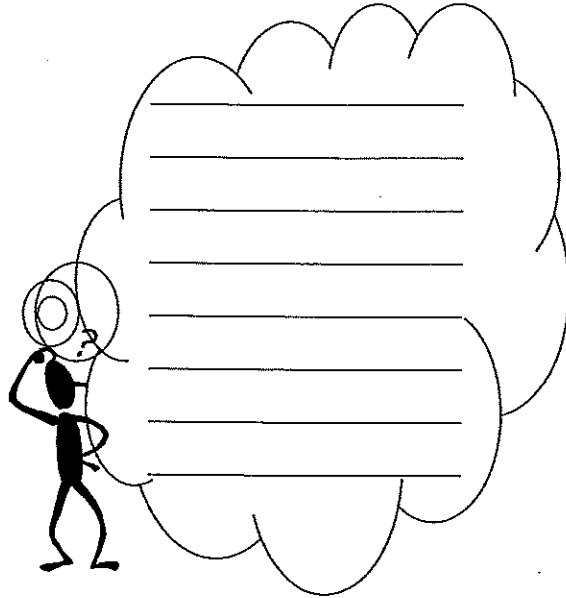


Inferring a Character's Feelings

How do you think the main character feels at the end of the story? What are some clues that made you think this?

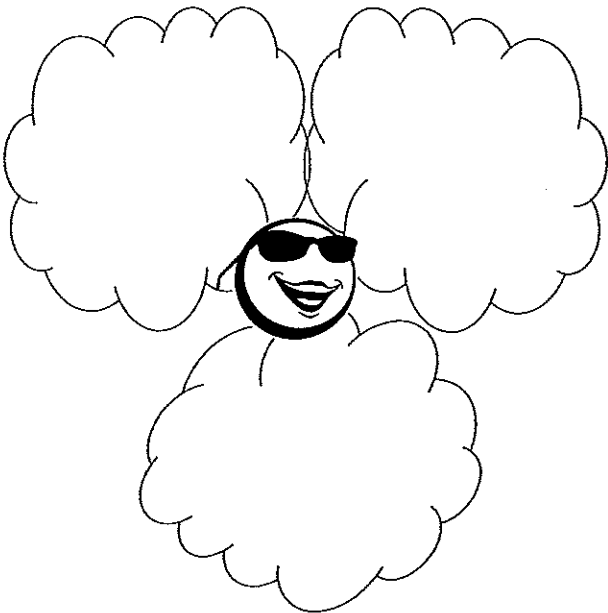
Inferring from a Character's Actions

How did the character's actions help you to understand how he or she was feeling?



Inferring Character's Emotions

Give examples from the story of when a character displayed different emotions.



Inferring Letter in Role

Pretend you are one of the characters. Write a letter to someone describing what has happened so far, how you are feeling, and what you think might happen next.





Inferring a Character's Thoughts

Are there times when you can determine what characters are thinking from their words and actions? Describe one of these times. Provide evidence from the text to support your answer.

Inferring In a Character's Shoes

If you were the main character, how would you feel and what would you do?

Inferring Offering Advice

Write a letter giving advice to a character. You can suggest actions the character might take, or reveal some important information.

Inferring Lessons Learned

What lessons can you learn from the story? How does the author teach you these lessons without stating them directly?
